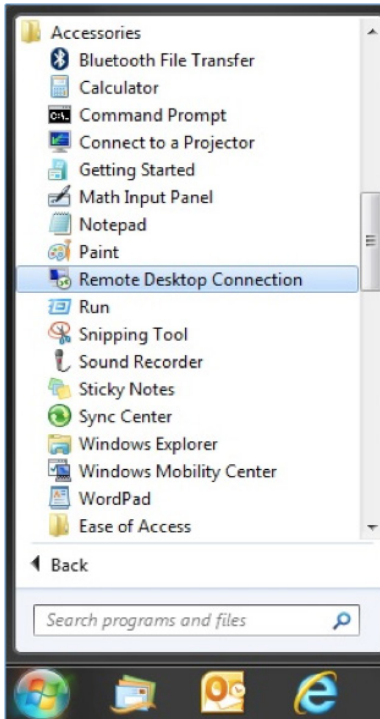
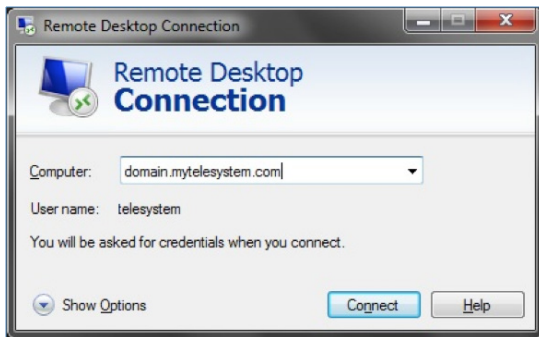




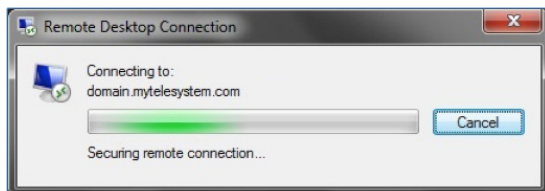
Accessing Cloud Server from Remote Desktop



1. Click the **Start** button and navigate to Remote Desktop Connection, then launch it.



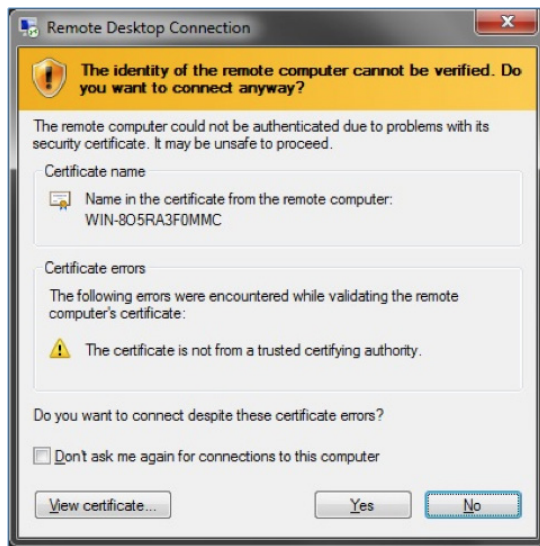
2. Enter the domain provided to you for your server in the **Computer** field.



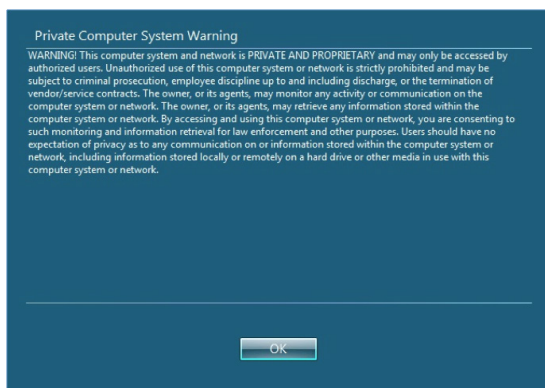
3. The client will begin connecting to the server.



4. You will be prompted for your login credentials. If you have accessed this server from this PC in the past your username may already be populated for you.



5. If you see this certificate notification, allow the connection to complete by clicking **Yes**.



6. Acknowledge the Private Computer System Warning by clicking **OK**.

7. You will now have access to your Cloud Server.