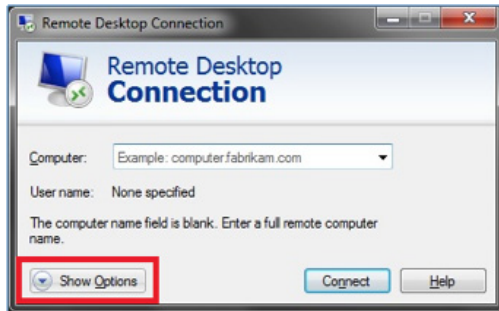
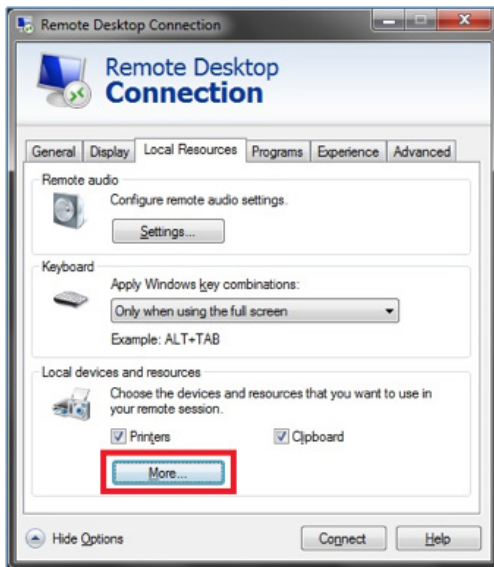




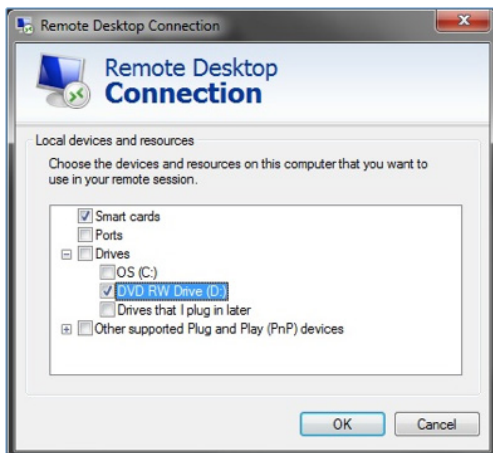
Installing Software to Cloud Server from a Remote Desktop Connection



1. Open the Remote Desktop Connection application and click on **Show Options**.

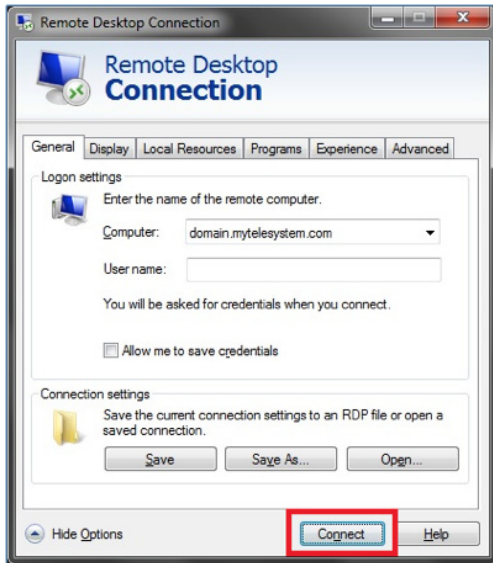


2. Navigate to the **Local Resources** tab and click on the **More** button.

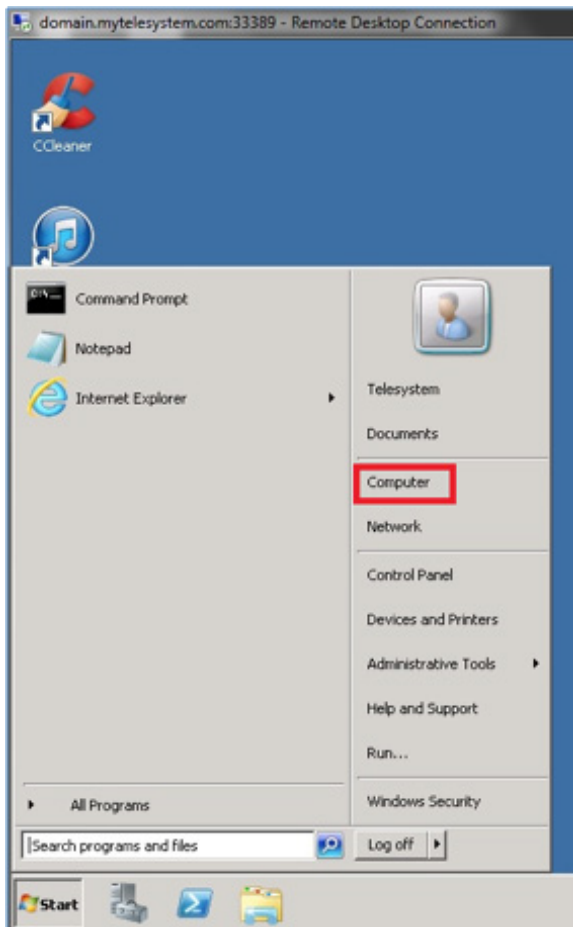


3. Choose the devices and resources on the local computer that you want to use in your remote session.

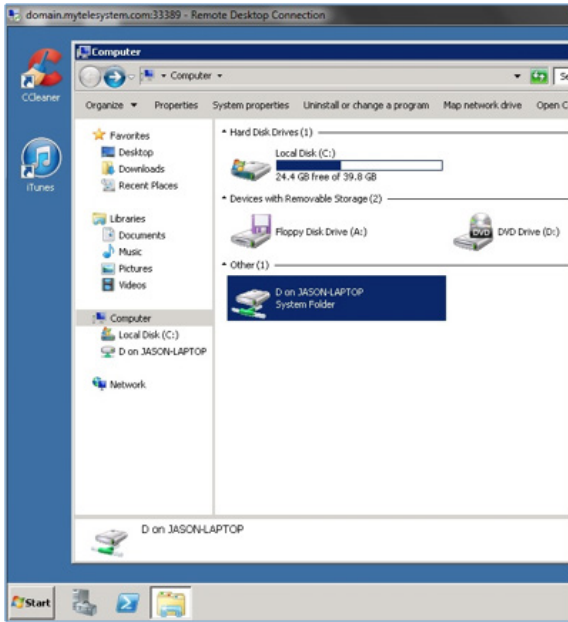
4. Connect your server.



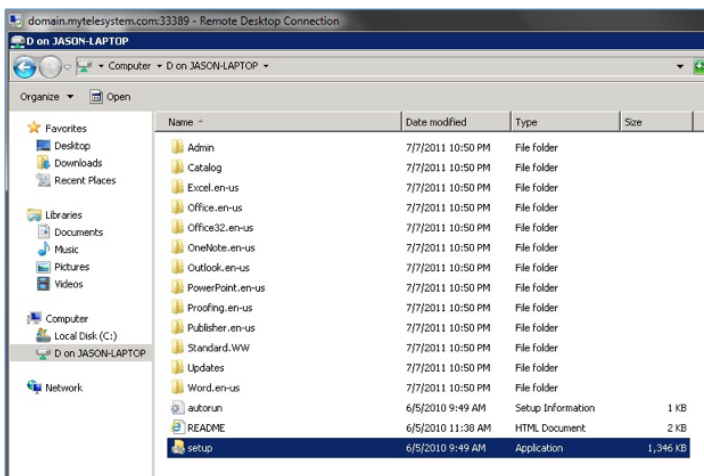
5. From the Remote Desktop Client, navigate to the Start menu and open **Computer**.



6. Locate the drive(s) you mapped in Step 3 under the **Other** section. Double-click to open.



7. Locate and open the setup or executable file for the program/application you wish to install.



8. Refer to the application/software developer instructions to complete the installation.